

Common Field Markings for Men's and Women's Lacrosse

Implementation Plan

Background

For many years, at least at the international competition level, men's and women's lacrosse has been played with different field dimensions and field markings. With many new countries introducing the sport of lacrosse, the FIL, at its General Assembly in June 2012, established a set of common perimeter and bench markings, in the hope of making as many of the field dimensions similar so they are more easily understood, remembered and implemented by lacrosse enthusiasts across the globe.

Benefits

The benefits in having a common lacrosse field for both men's and women's field lacrosse include:

- Increased chance of having permanent lines included in synthetic surfaces
- Reduced time required to mark both a men's and women's field
- Less confusion regarding what line is used for what game
- Alignment with other field sports where field markings are the same
- Fields can be more easily shared by both men' and women's teams
- Goals can be permanent on grass fields and not have to move for each game
- Increasing potential for inclusion of lacrosse in the Olympics

Implementation schedule

The following implementation schedule has been established for the unified field:

FIL International events

2015 U19 Women's World Championship – unified dimensions

2016 U19 Men's World Championship – traditional dimensions

2017 Women's World Cup – unified dimensions

2018 Men's World Championship – unified dimensions

2019 and beyond – unified dimensions

National and domestic

Changes may be introduced as soon as practical, and are encouraged.

Summary of changes

A summary of these changes is as follows, with more detail provided in the attached documents.

Men

- Size of field increased from 110 yard X 60 yard to 110 m X 60 m (120.30 yard X 65.62 yard)
- Goal crease radius increased from 3 yard to 3 m (3.28 yard)
- Space behind the goal reduced from 15 yard to 12 m (13.12 yard)
- Substitution area or gate increased from 10 yard to 13 m (14.22 yard)
- Centre face-off X to wing line and goal line to men's restraining line remain essentially the same but the measurement has been adjusted to metric.
- Additional field length is added to the centre of the field between the 2 restraining lines and the additional width is added between the wing lines and the sidelines.

Women

- Size of field reduced from 120m x 60m to 110m x 60m
- Restraining line reduced from 27m to 25m
- Space behind goal reduced from 15m to 12m
- Team bench area reduced from 28m to 18.5m

Alternative measurements for existing facilities

FIL has developed a set of measurements for existing fields. These are for the following size pitches:

Diagrams available to download ([hyperlink these](#))

Unified field pitch – 110m x 60m

1. Location of markings for the women's game only
2. Location of markings for the men's game only
3. Location of markings for both men's and women's games

Unified field, modified to fit on a field hockey pitch – 91.4m x 55m

4. Location of markings for the women's game only
5. Location of markings for the men's game only
6. Location of markings for both men's and women's games

Guidelines for marking the unified field, where the width available is less than 60m

7. Location of markings for the women's and men's games

Guidelines for marking the unified field, where the length available is less than 110m

8. Location of markings for the women's and men's games

FIL Unified Men's and Women's Lacrosse Field

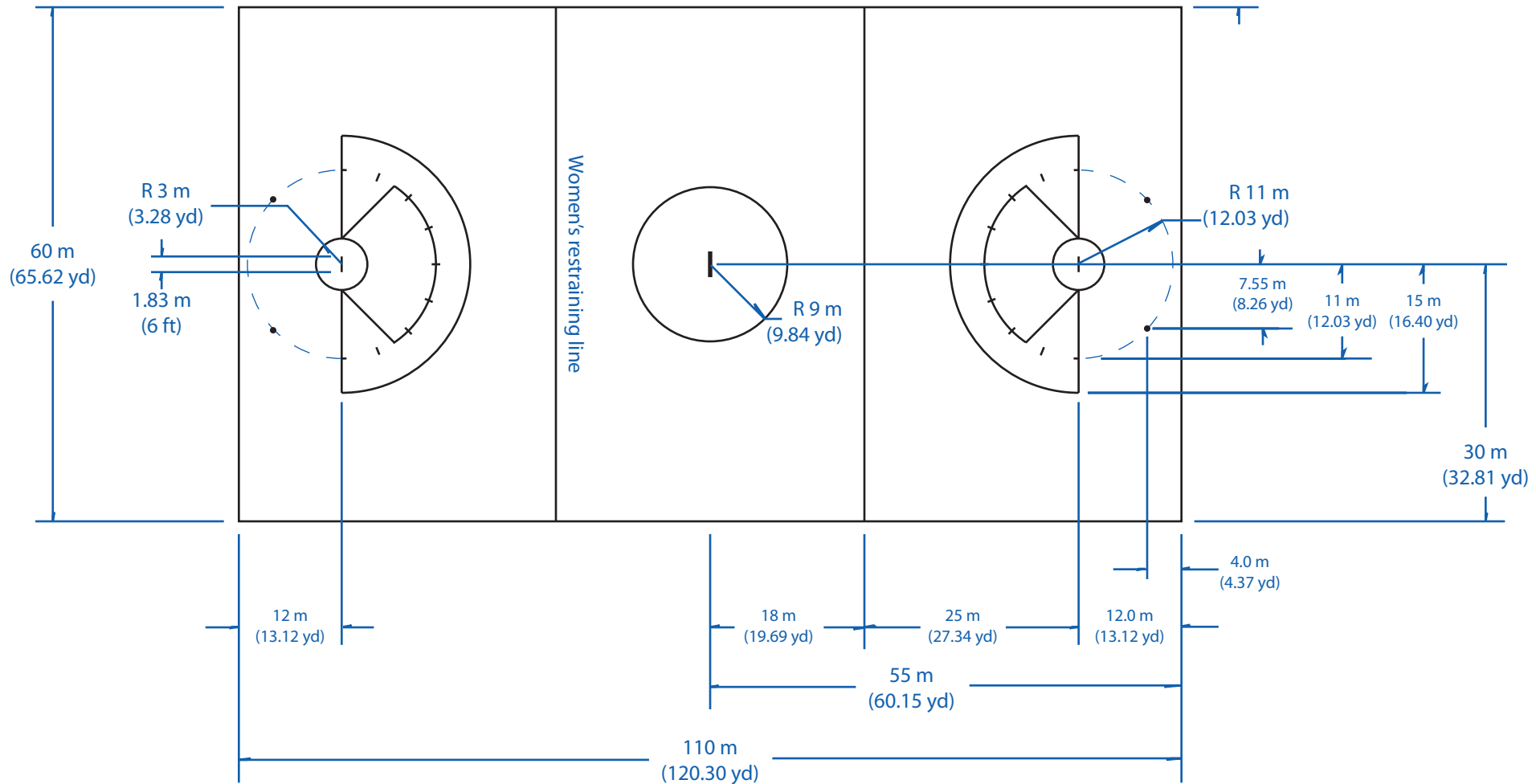
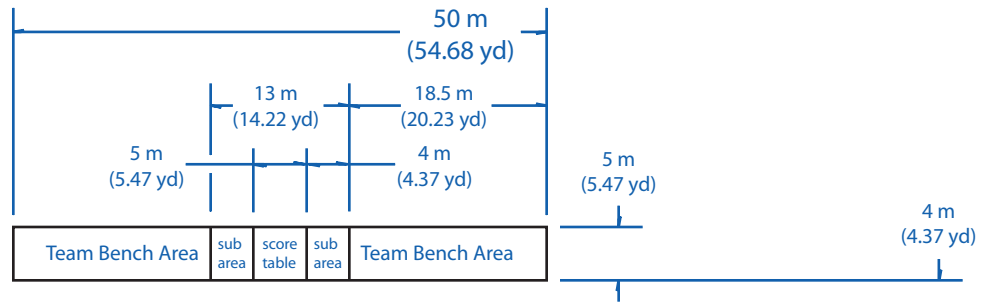
Markings and labels for the Women's game only

• 110 metre X 60 metre playing field

- all black lines on this diagram are field markings
- all blue lines are diagram labels only

NOTE

- women's goal area fan to be marked as per FIL women's rulebook
- all lines are 5.1 cm (2 inches) wide



Location of markings for the Women's game

Diagram # 1

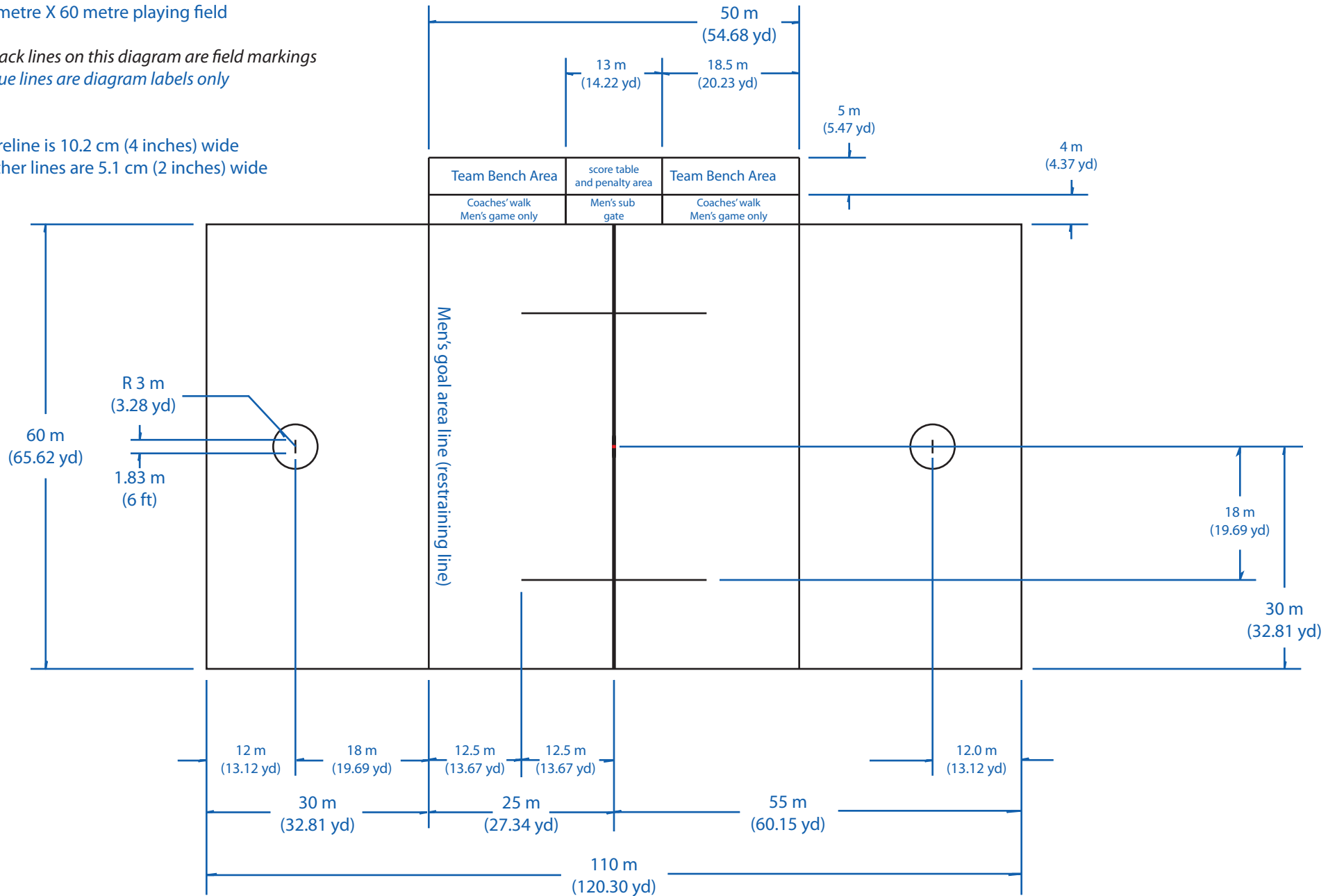
FIL Unified Men's and Women's Lacrosse Field

- Approved at the 2012 FIL General Assembly
- 110 metre X 60 metre playing field

- all black lines on this diagram are field markings
- all blue lines are diagram labels only

NOTE

- centreline is 10.2 cm (4 inches) wide
- all other lines are 5.1 cm (2 inches) wide



Location of markings for the Men's game

Diagram # 2

Modified FIL Unified Men's and Women's Lacrosse Field

- for FIH field hockey pitch
- 91.4 metre X 55 metre playing field

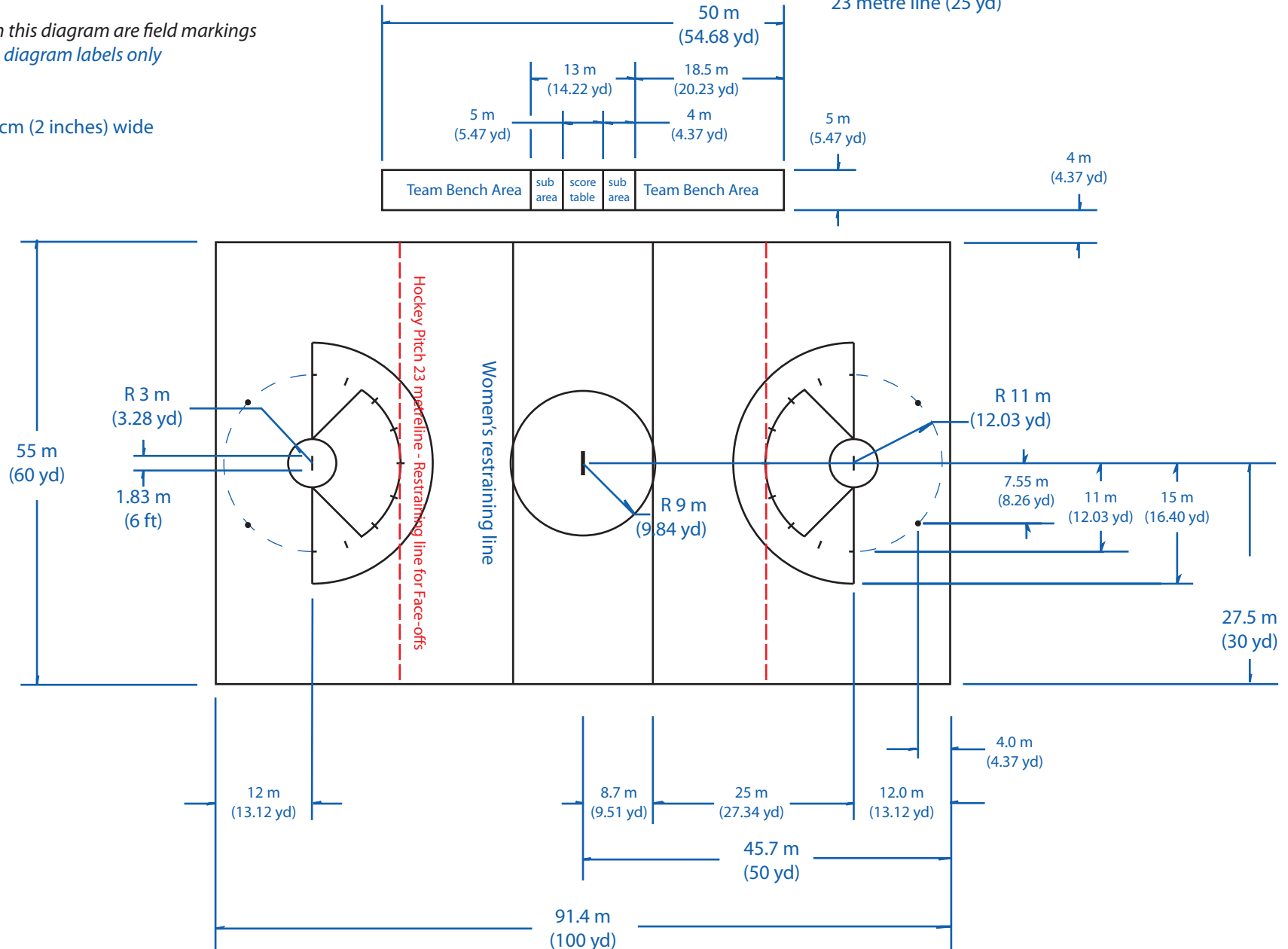
- all black lines on this diagram are field markings
- all blue lines are diagram labels only

NOTE

- all lines are 5.1 cm (2 inches) wide

Use of Restraining Lines in the Women's Game

- during play use the Women's restraining line
- during face-offs use the field hockey pitch 23 metre line (25 yd)



Location of markings for the Women's game on a field hockey pitch

Diagram # 4

Modified FIL Unified Men's and Women's Lacrosse Field

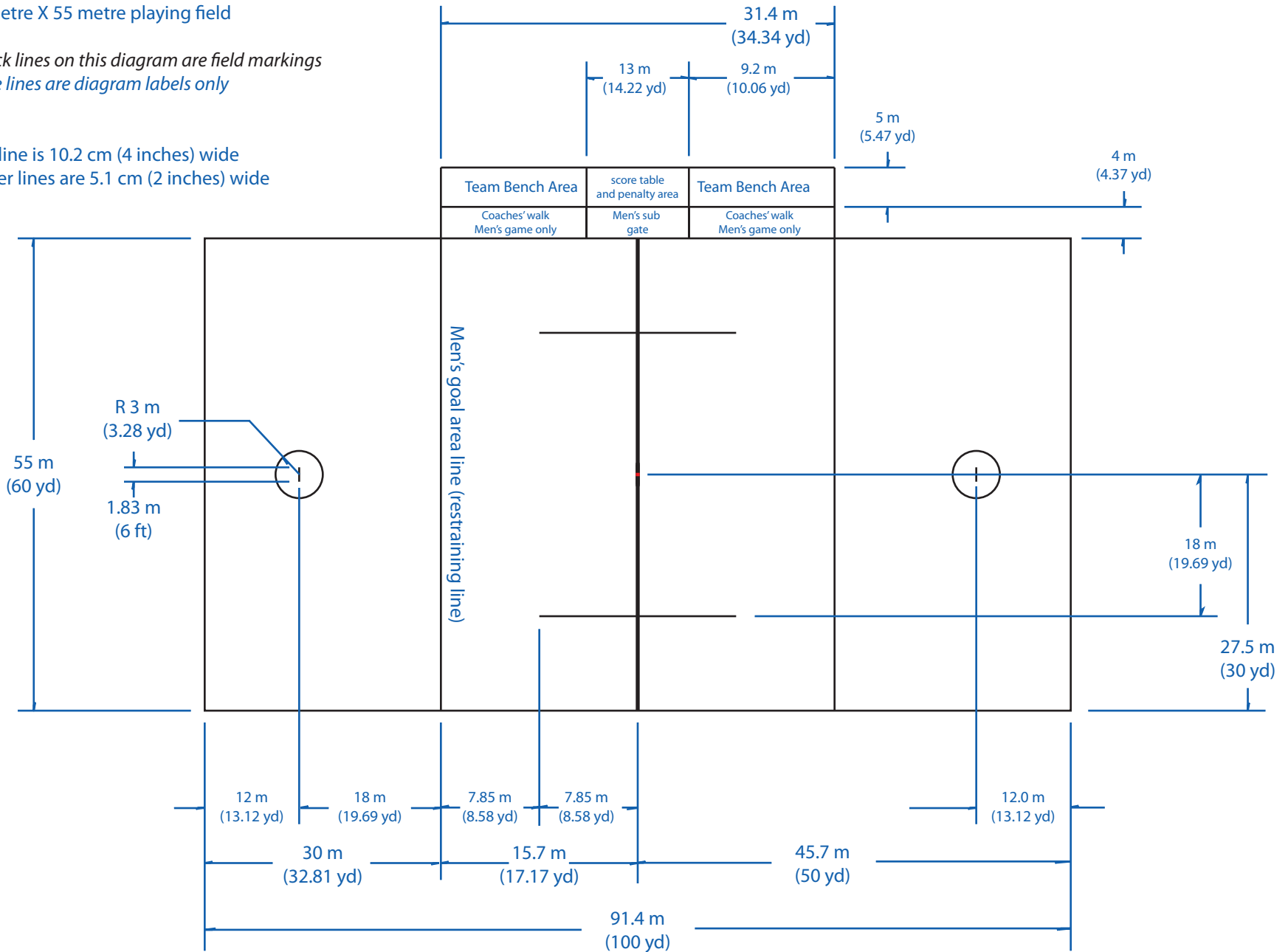
NOT TO SCALE

- for FIH field hockey pitch
- 91.4 metre X 55 metre playing field

- all black lines on this diagram are field markings
- all blue lines are diagram labels only

NOTE

- centreline is 10.2 cm (4 inches) wide
- all other lines are 5.1 cm (2 inches) wide



Location of markings for the Men's game on a field hockey pitch

Diagram # 5

Modified FIL Unified Men's and Women's Lacrosse Field

- for FIH field hockey pitch
- 91.4 metre X 55 metre playing field

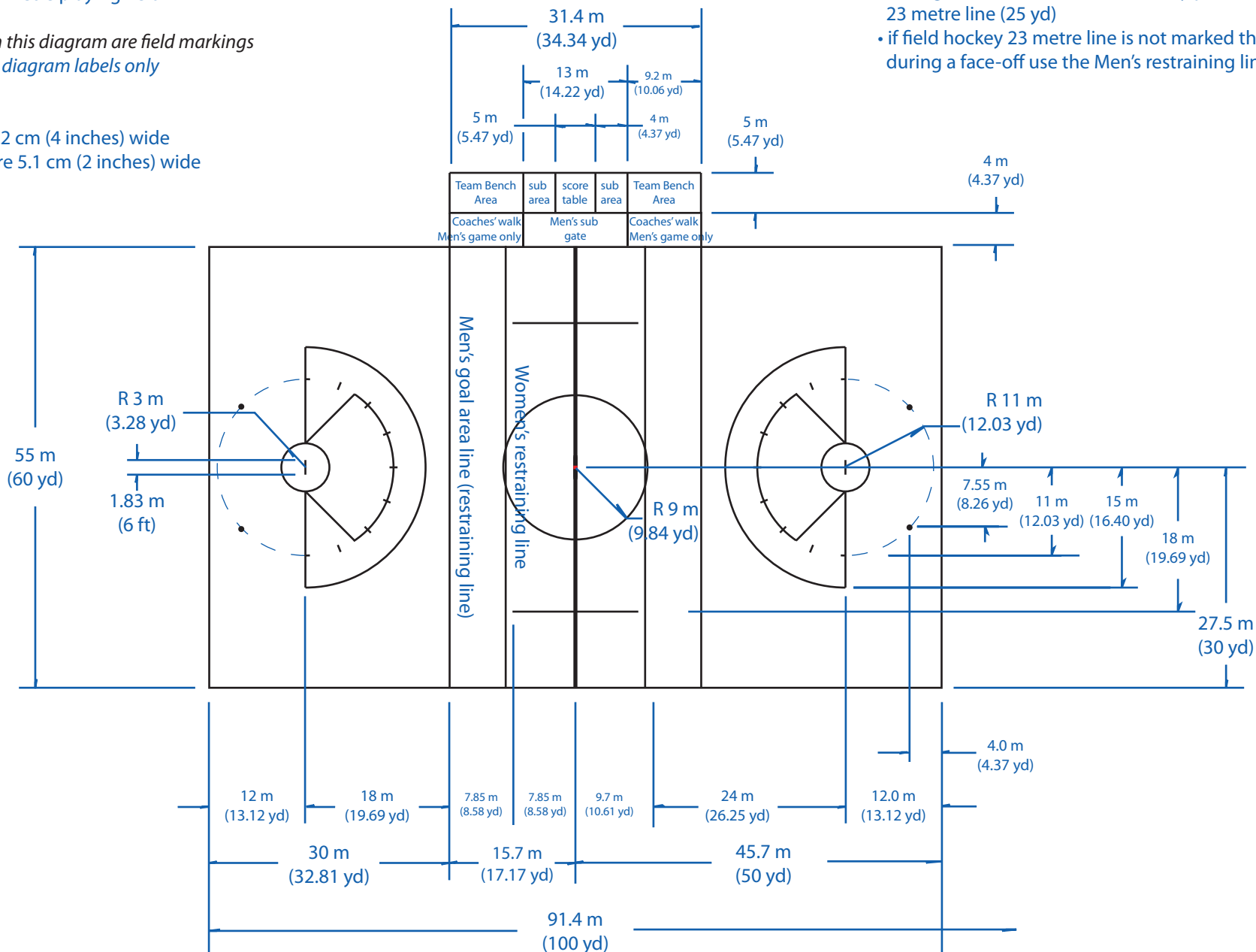
- all black lines on this diagram are field markings
- all blue lines are diagram labels only

NOTE

- centreline is 10.2 cm (4 inches) wide
- all other lines are 5.1 cm (2 inches) wide

Use of Restraining Lines in the Women's Game

- during play use the Women's restraining line
- during face-offs use the field hockey pitch 23 metre line (25 yd)
- if field hockey 23 metre line is not marked then during a face-off use the Men's restraining line



Mostly men's field dimensions

Mostly women's field dimensions

Diagram # 6

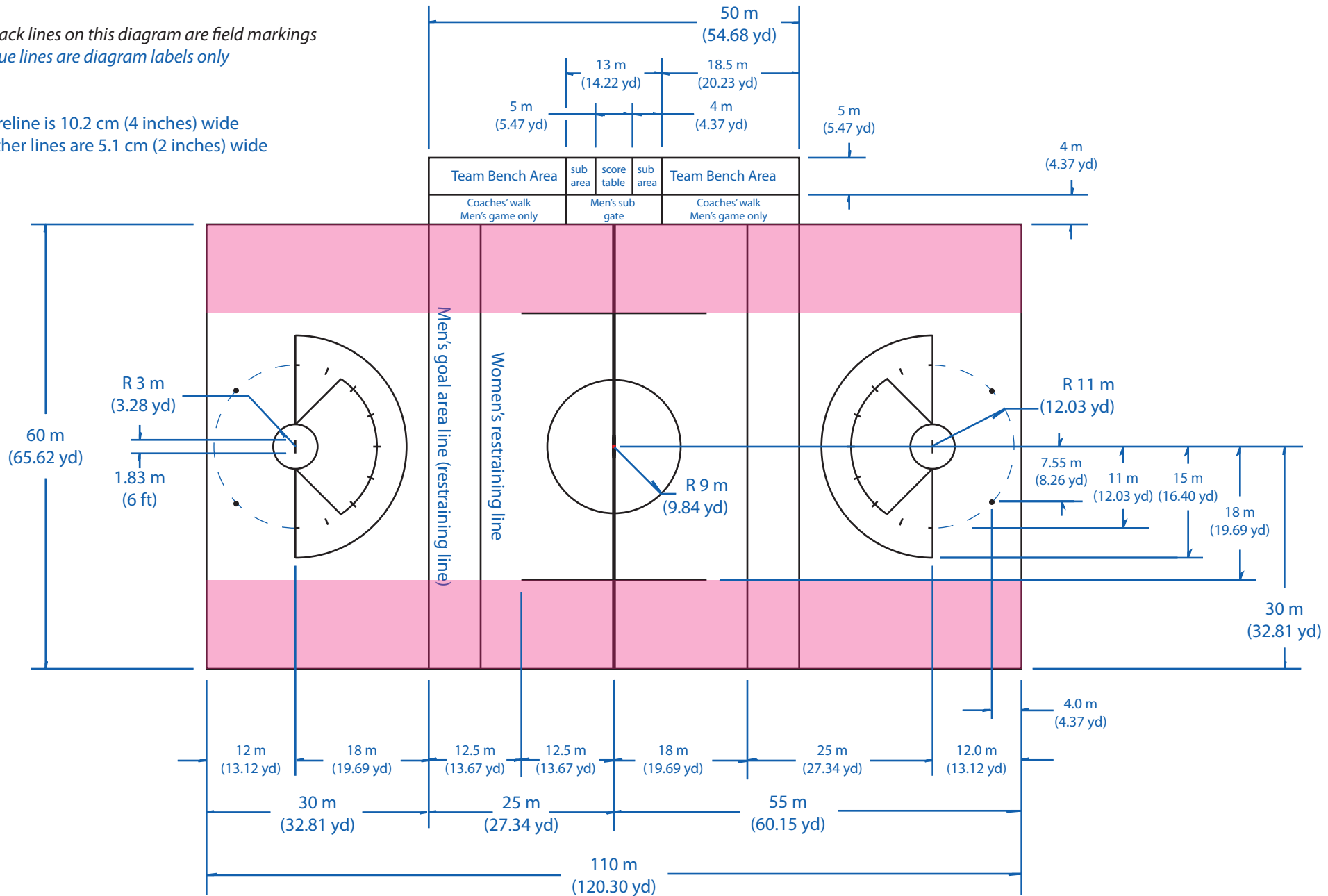
Modifying the FIL Unified Men's and Women's Lacrosse Field

• 110 metre X less than 60 metre playing field

- all black lines on this diagram are field markings
- all blue lines are diagram labels only

NOTE

- centreline is 10.2 cm (4 inches) wide
- all other lines are 5.1 cm (2 inches) wide



Remove space from pink area when width is less than 60 metres
remove an equal amount from each side of the field

Diagram # 7

Modifying the FIL Unified Men's and Women's Lacrosse Field

• less than 110 metre X 60 metre playing field

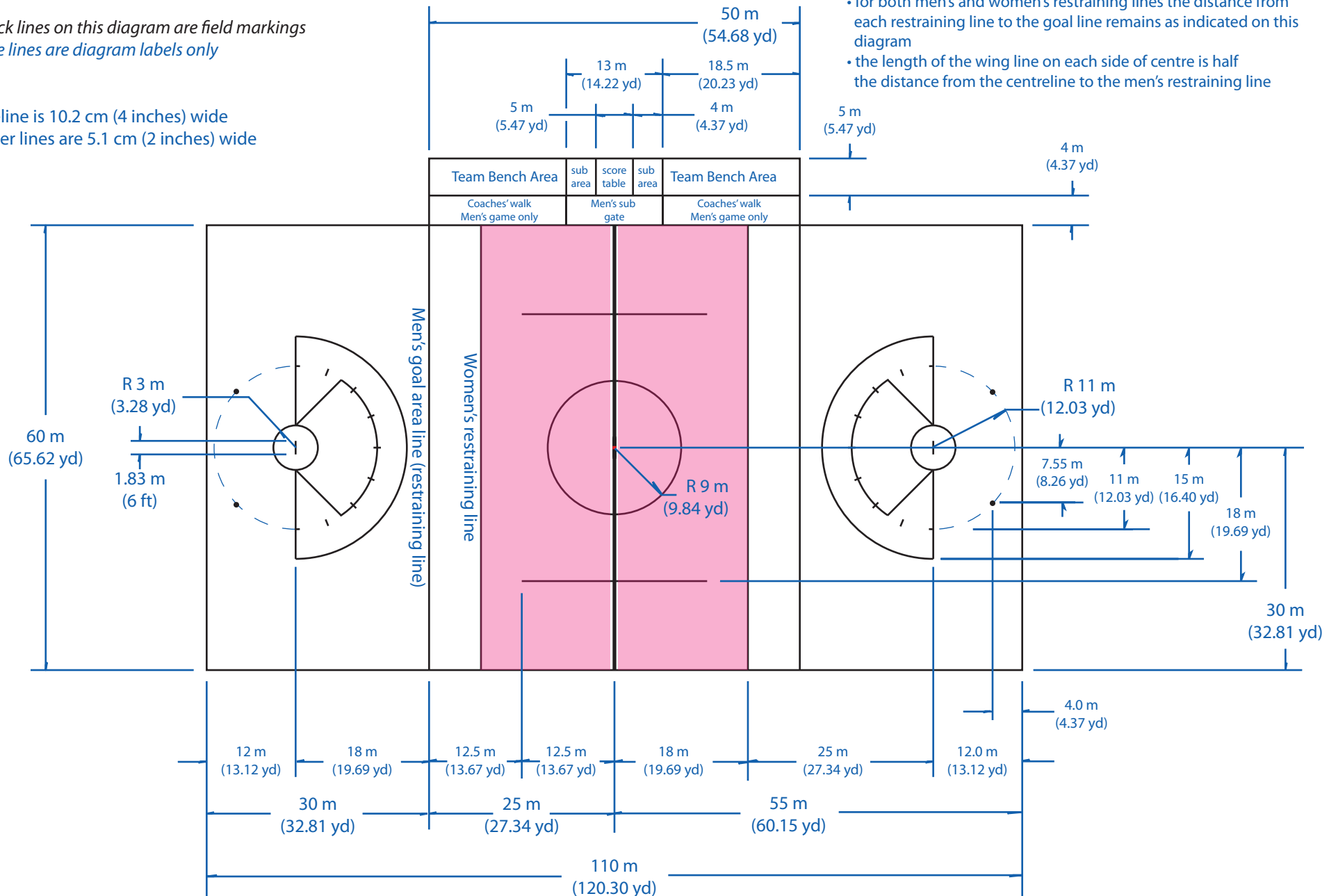
- all black lines on this diagram are field markings
- all blue lines are diagram labels only

NOTE

- centreline is 10.2 cm (4 inches) wide
- all other lines are 5.1 cm (2 inches) wide

Guidelines for reducing length of field

- remove equal amount from both sides of centreline
- for both men's and women's restraining lines the distance from each restraining line to the goal line remains as indicated on this diagram
- the length of the wing line on each side of centre is half the distance from the centreline to the men's restraining line



Remove space from pink area when length is less than 110 metres

Diagram # 8